

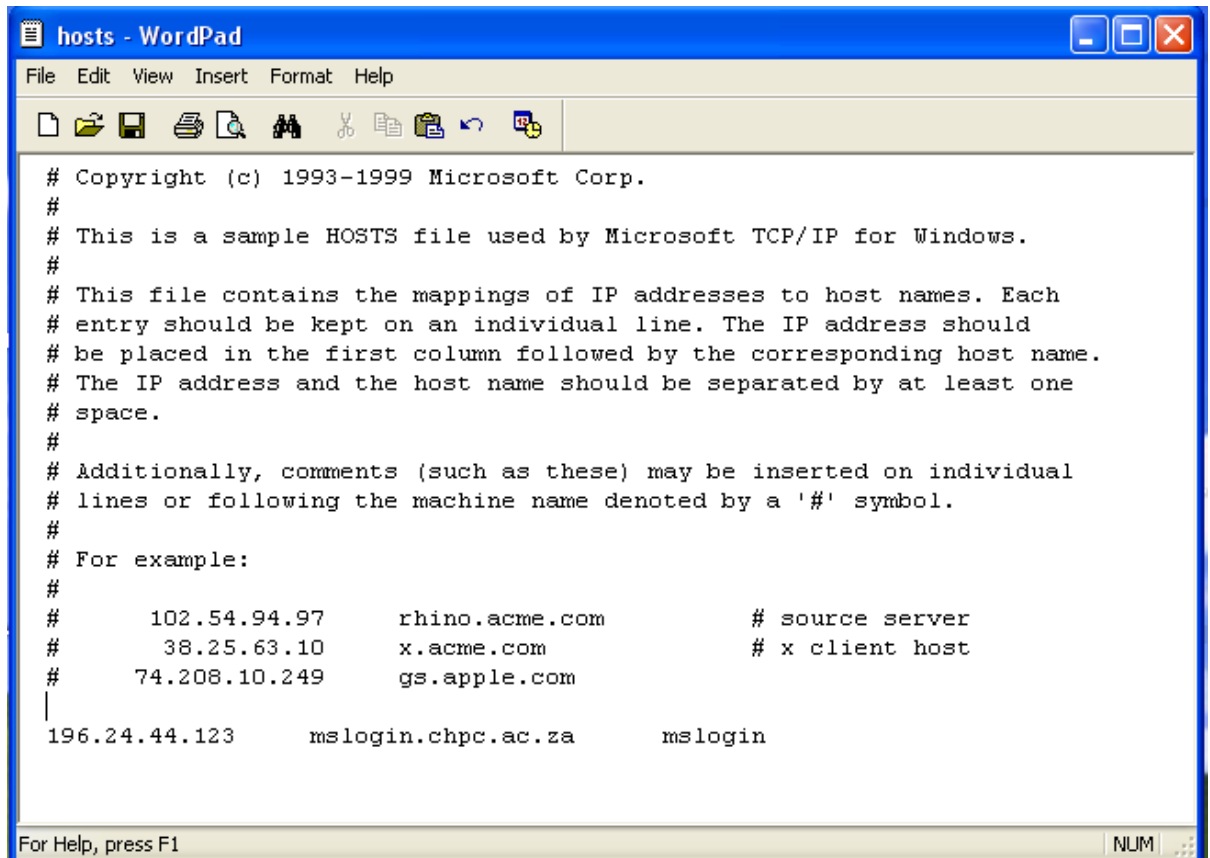
## Running Materials Studio

Configure your Materials Studio to run using CHPC resources.

Do the following to configure your gateway and the license server:

### 1. Edit the hosts file.

Edit C:\WINDOWS\system32\drivers\etc\hosts using wordpad. The last lines of the hosts file should look like the ones in the figure below. Save it



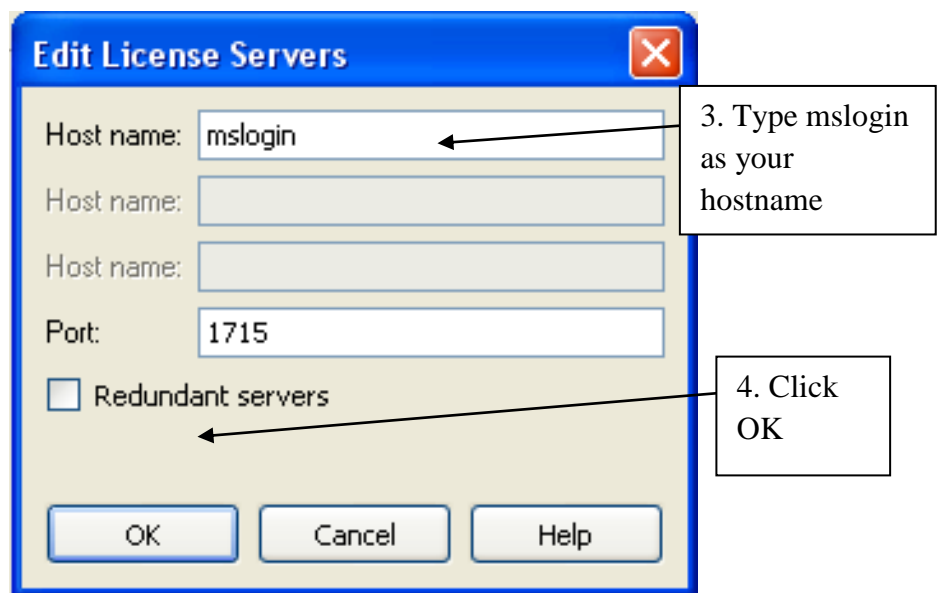
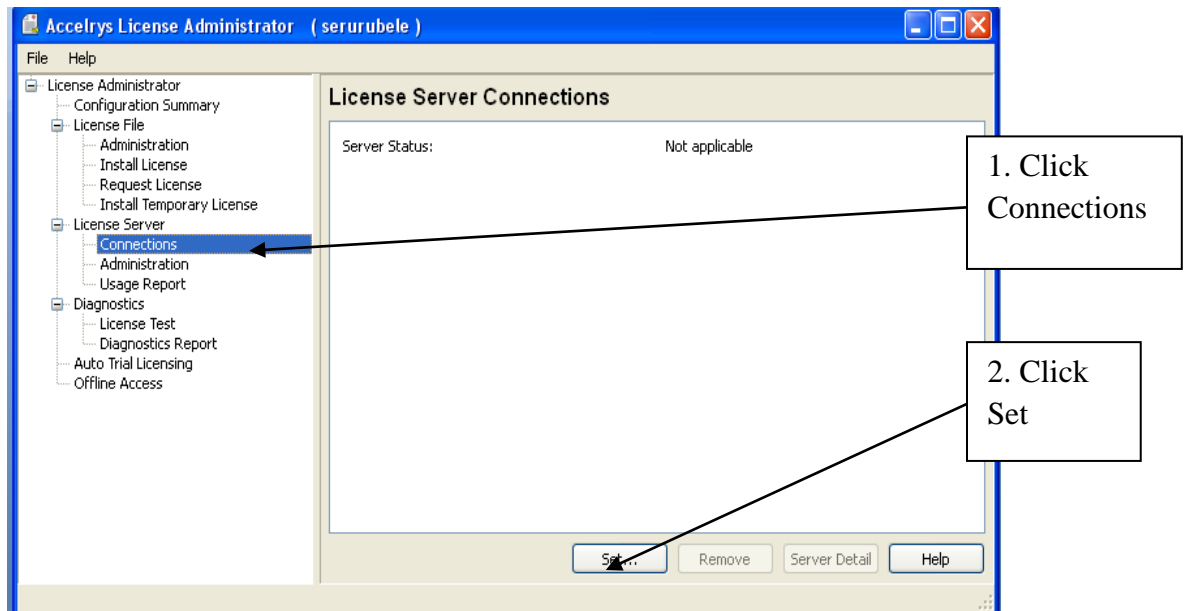
```
# Copyright (c) 1993-1999 Microsoft Corp.
#
# This is a sample HOSTS file used by Microsoft TCP/IP for Windows.
#
# This file contains the mappings of IP addresses to host names. Each
# entry should be kept on an individual line. The IP address should
# be placed in the first column followed by the corresponding host name.
# The IP address and the host name should be separated by at least one
# space.
#
# Additionally, comments (such as these) may be inserted on individual
# lines or following the machine name denoted by a '#' symbol.
#
# For example:
#
#       102.54.94.97       rhino.acme.com           # source server
#       38.25.63.10      x.acme.com               # x client host
#
#       74.208.10.249    gs.apple.com
|
196.24.44.123          mslogin.chpc.ac.za      mslogin
```

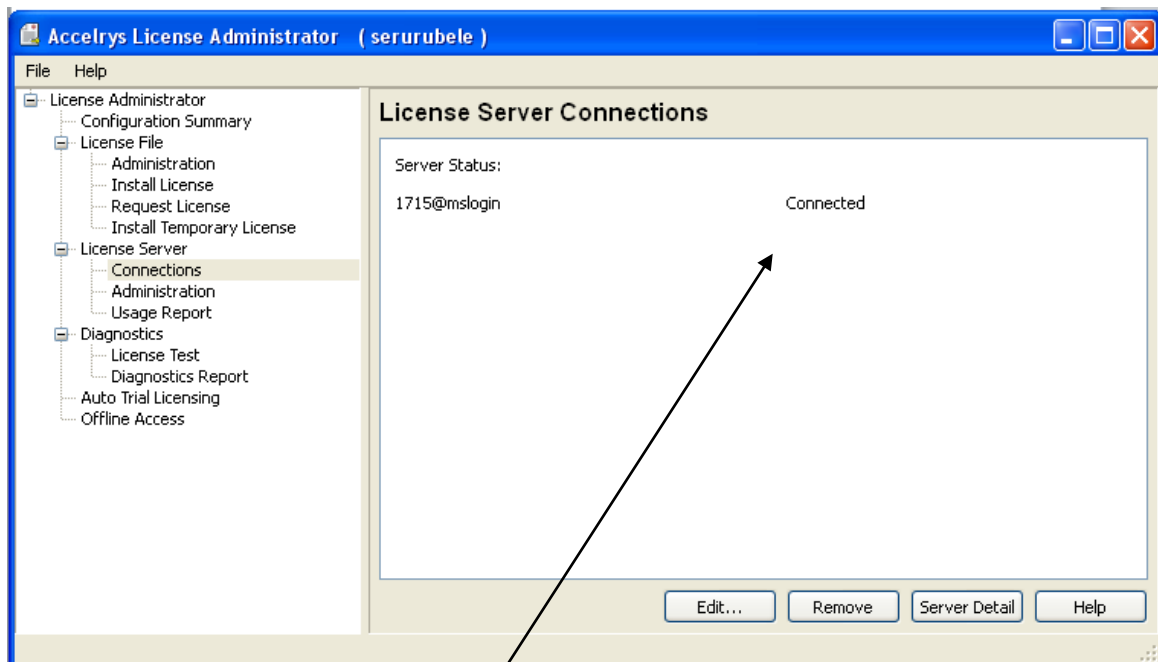
## 2. Install Materials Studio on your PC/Desktop or Laptop.

After installing Materials Studio do the following:

Go to start → All programs → Accelrys → Licensing → License Administrator 7.6.11

You'll see the figure below

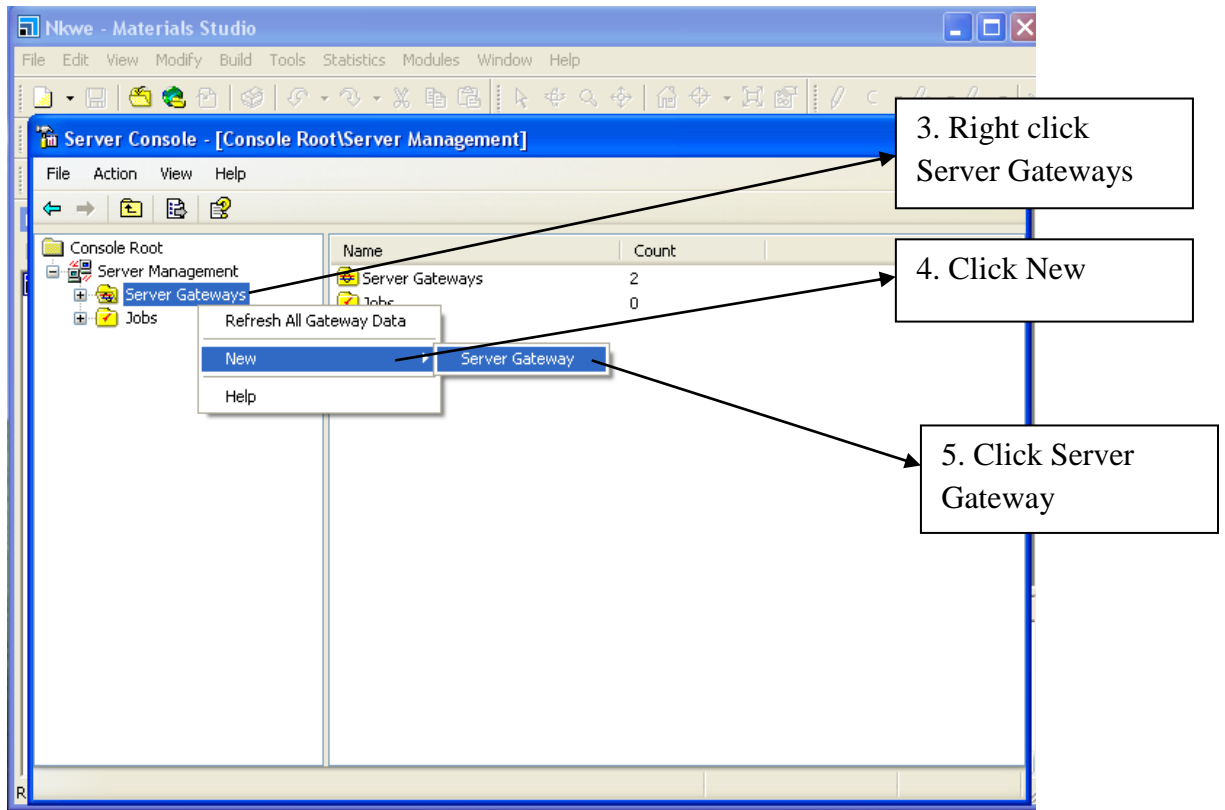
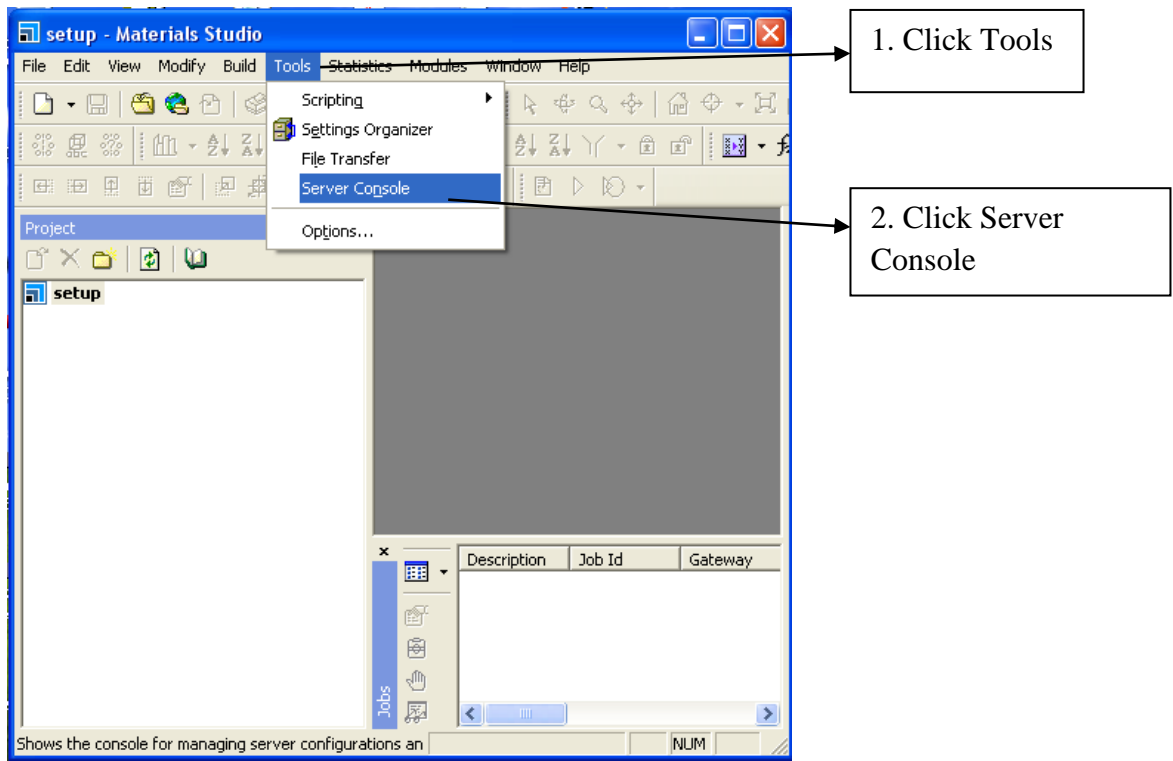


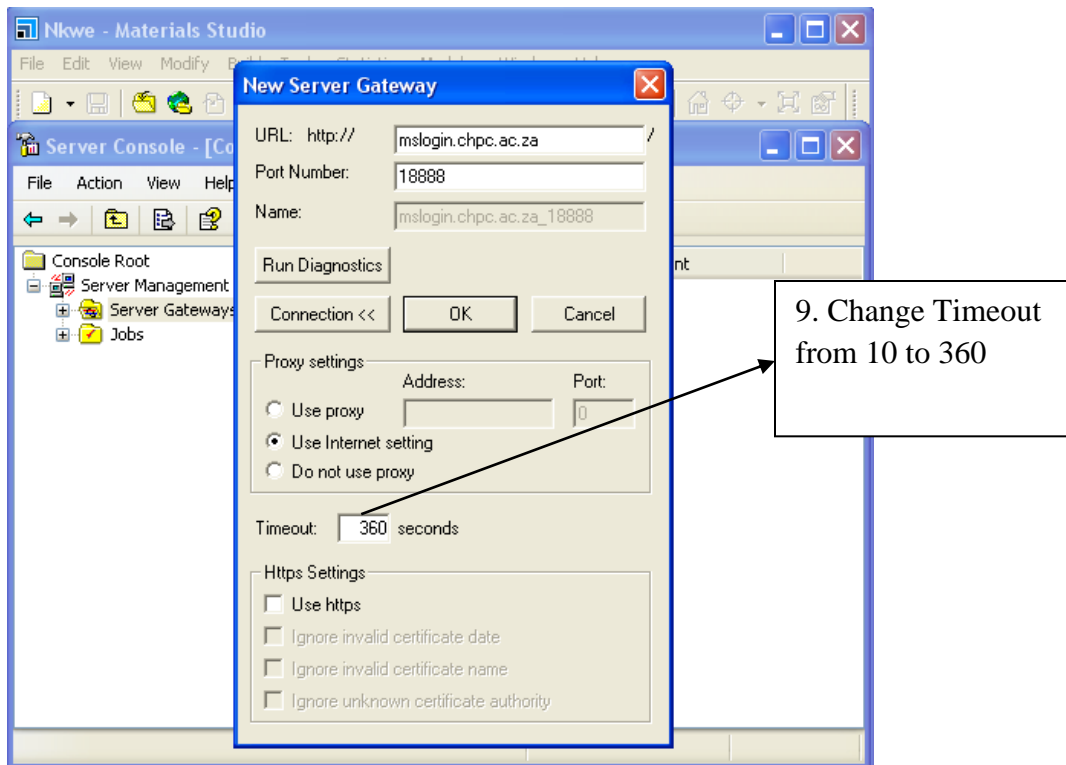
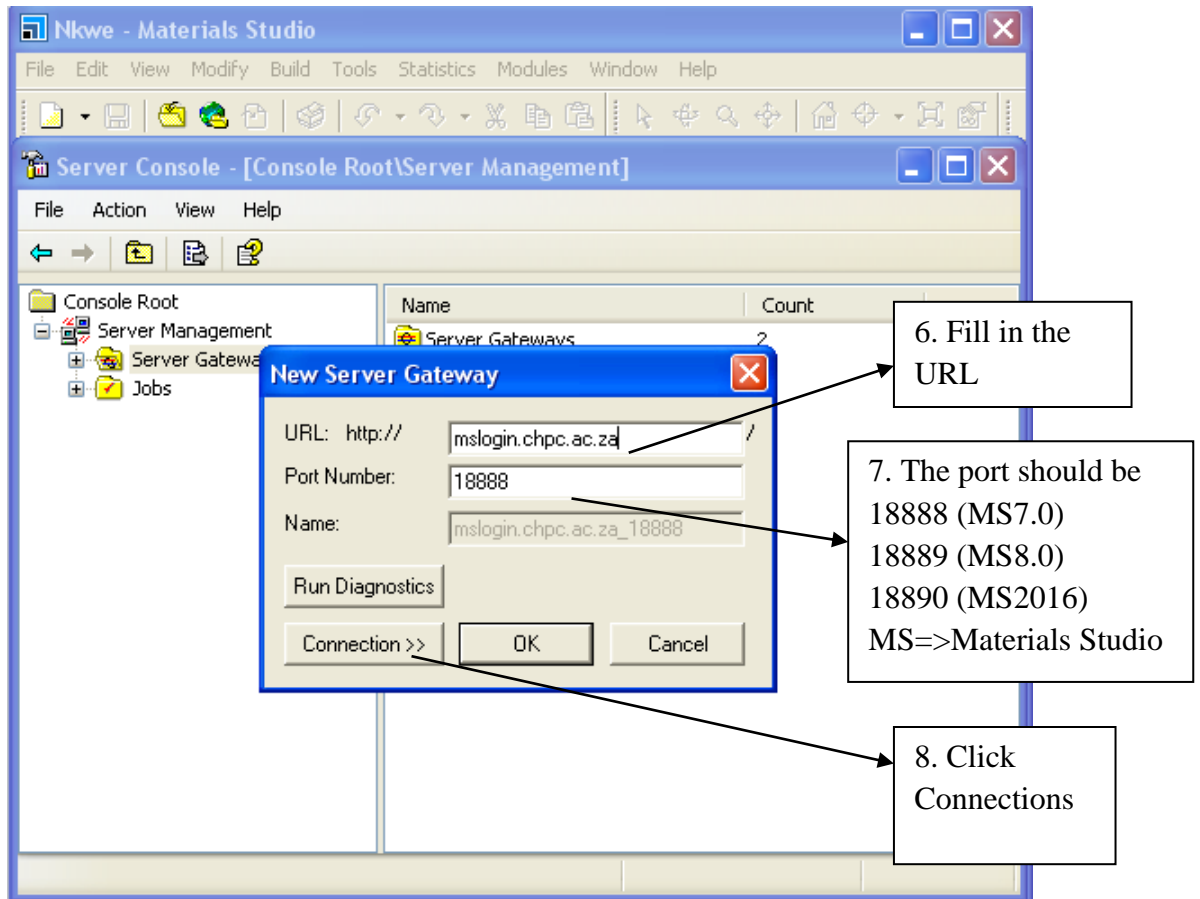


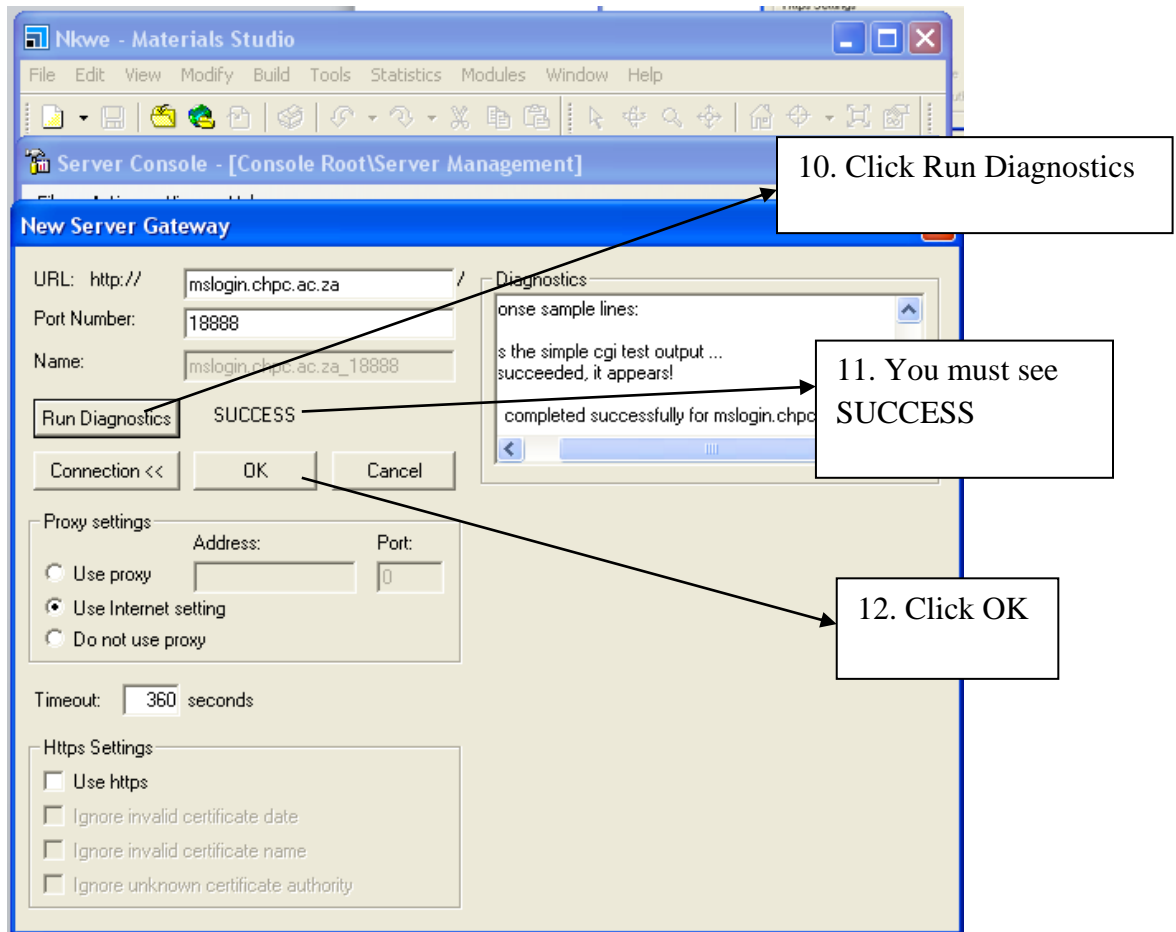
5. If you see connected then you are connected to the license server

You can now open Materials Studio GUI

### 3. Open Materials Studio and configure Gateway.



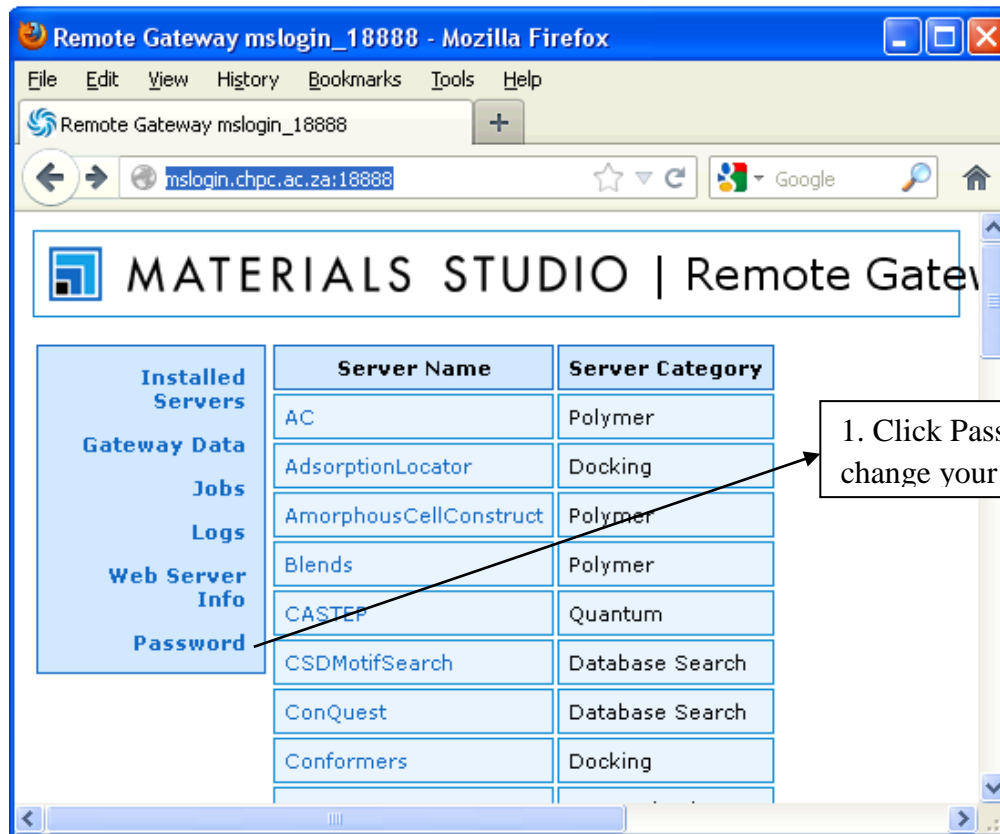




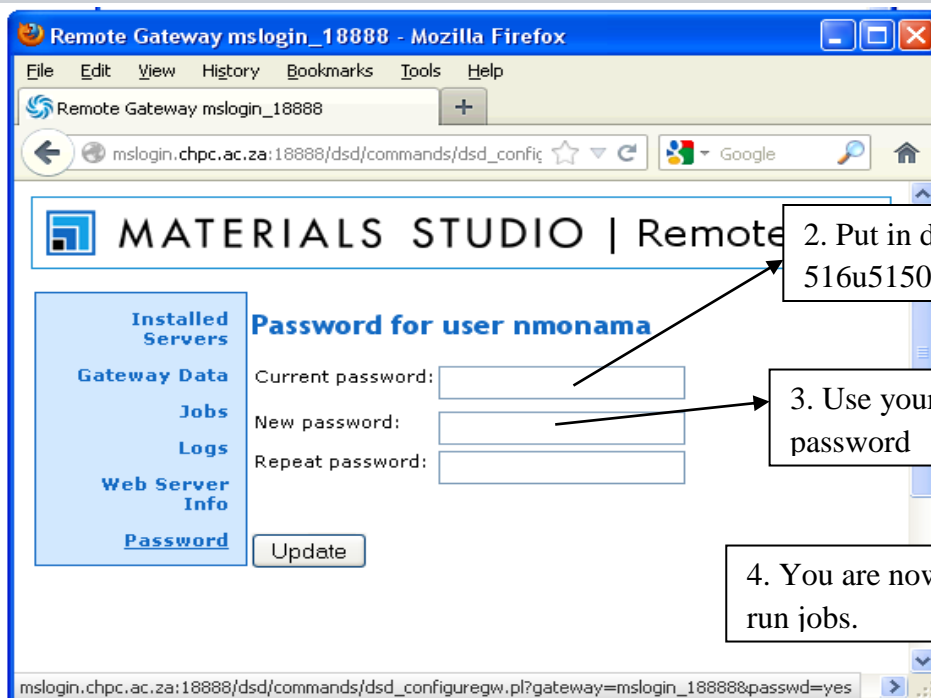
A pop-out that request username and password will appear  
Put in your chpc username and the password which you'll get from CHPC research scientist.

**NB: Please change the password to be the same as the one you use on the cluster**

4. Open your web browser as follows and type <http://mslogin.chpc.ac.za:18888> (Materials Studio 7.0); <http://mslogin.chpc.ac.za:18889> (Materials Studio 8.0) and <http://mslogin.chpc.ac.za:18890> (Materials Studio 2016) in the address slot of your web browser. Change your password as follows:



1. Click Password to change your password



2. Put in default password: 516u5150

3. Use your cluster password

4. You are now ready to run jobs.